

DESCRIPTION:

- Vinyl starter track for terminations of Surewall EIFS in lieu of backwrapping with mesh
- Provides straight edges and termination lines
- Facilitates sealant maintenance
- Saves application time and labor
- Type: Track
- Dimensions:
 - ◆ Length: 10' (3048mm)
 - ◆ Width: 1" (25mm), 1 1/2" (38mm), 2 in. (51mm), 2 1/2 in. (64mm), 3 in. (76mm).
 - ◆ Other dimensions: Provided upon request

USES:

With all Surewall EIFS:

- Encapsulation of the system at building perimeters at grade
- Termination of edges of all Surewall Drainage Systems

COMPOSITION:

- Rigid PVC plastic
- Formulated to resist the effects of ultraviolet exposure and freeze/thaw cycling
- Conformance standard: ASTM D1784 cell classification 13244C
- Color: White

APPLICABLE STANDARDS:

Conforms to ASTM C1063 Specification for Exterior Installation of Lathing and Furring

TESTING:

Physical Properties	ASTM Test	at 0 F	at 72 F
Tensile Strength, psi	D 638	8,100	5,900
Tensile Modulus, psi	D 638	425,000	360,000
Flexural Strength, psi	D 790	16,500	11,200
Flexural Modulus, psi	D 790	497,000	415,000
Izod Impact (ft-lb0/in)	D 256	1.1	3.4
Heat Distortion Temp			
F at 254 psi	D 648		160 F
Coefficient of Linear Thermal Expansion			
(in/inx10/5)	D696		3.45
E-84 Fire Tunnel Test			
Flame Spread			18
Fuel Contribution			ND
Smoke Density @ 35 Mils			250
Fire Rating			Class A
Reaction to Stucco or Plaster			None

Track

PACKAGING:

10 ft (3048mm) lengths in cartons.

APPLICATION:

- As a starter strip above grade or pavement:
- Above grade, chalk a level line a minimum of 8" (20cm) above the finished top soil. Above pavement, chalk a level line a minimum of 2" (5cm) above the finished pavement. Please note: Overlap the system onto the foundation in framed construction (see Termination Detail for the Surewall System being used).
- Starting from the center of the length of track and working out to the ends, fasten the track every 10–12" (250–300mm). On framed substrates, use 1 1/4" (32mm) type "S" (steel framing) or "W" (wood framing), self-drilling, corrosion-resistant screws. On masonry substrates, masonry nails are acceptable.
- Install 6"- (150mm-) long pieces of splice angle at track end abutments. Splice angle is supplied in 10' (3048mm) lengths packed with each carton of track.
- At all inside and outside vertical corners, miter cut pieces accurately to abut tightly together.

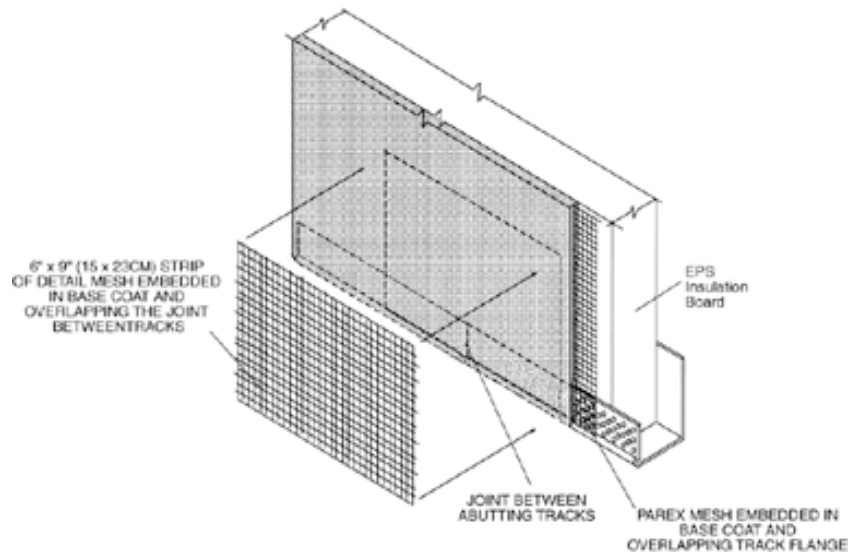
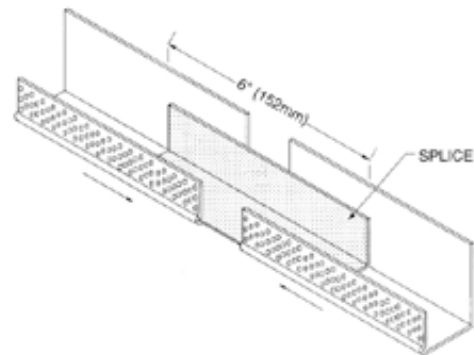
Standard System

- Position tracks in their appropriate locations by first chalking a level or plumb line as appropriate. Fasten as above.
- The insulation board may be applied directly after the track has been fastened. When applying base coat, ensure that the reinforcing mesh overlaps the perforated front edge of the track.

Water Master Systems:

Refer to system details for installation of weather-resistive membrane and mineral wool insulation strips Drainage EIFS—StuccoWrap with Track.

Note: See Surewall System Details for related information on the application of Surewall Track.



Job name _____

Contractor _____

Date _____

Submittal Approvals:
(Stamps or Signatures)

RES Architectural Sales, Inc.

143 S. Franklin St., Chagrin Falls, OH 44022 • Phone: Toll Free 888-888-7273 Local 440-247-4070 • Fax 440-247-4069
Website: www.resarch.com • Email: sales@resarch.com